



LKTBV2 CCT Batten Fitting



CCT changing and power adjustable.

Retrofit fixings points for replacements of conventional fluorescent fixtures.

Push fit terminals.

Hinged diffuser for no hassle installation.

Plug and Play emergency conversion pack available, to be ordered separately.

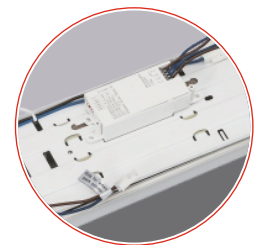
Plug and play microwave sensor, to be ordered separately.

Specifications:

- AC220-240V, 50/60Hz
- IP Rating: IP20
- LED Chips: SMD2835
- Efficacy: 120 Lm/W
- CCT: 3000/4000/6500K
- RA>80, PF>0.9
- Materials: PC Diffuser + Steel base
- Driver Type: Non-Isolated
- Beam Angle: 110°
- Working Temperature: -10° ~ +40°
- Safety class: Class I
- Lifespan: 50000 hours
- Certification: CE, CB, RoHS



Emergency kit
plug and play install



Microwave Sensor plug



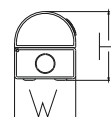
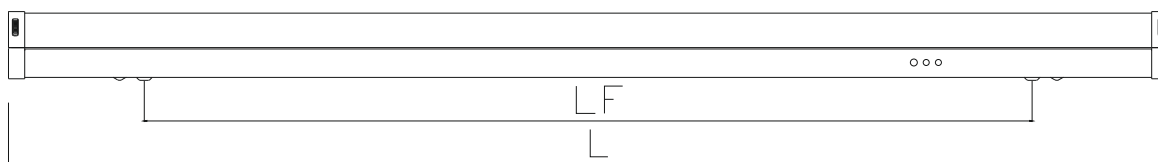
LKTBV2 CCT Batten Fitting



Available Models:

Product Code	Rated Power	Lumen Output
LKV2LED40-4F-CCT3	22/28/34/40W	2640/3360/4080/4800Lm
LKV2LED60-5F-CCT3	34/43/52/60W	4080/5160/6270/7200Lm

Dimensions:



Product Code	L(mm)	W(mm)	H(mm)	LF(mm)
LKV2LED40-4F-CCT3	1175	62	70	900
LKV2LED60-5F-CCT3	1475	62	70	1200