

LKANT-5-AT - Microwave Sensor

for use with LKHBC-150-PS-CCT LED High Bay

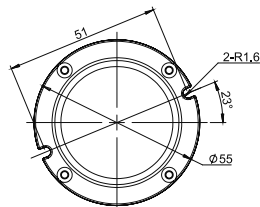
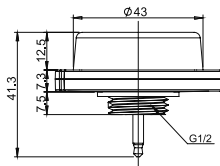
Installation Sheet



LKANT-5-AT



Remote Control
(optional)



Introduction:

The LKANT-5-AT is a motion sensor designed to be used in conjunction with the LKHBC-150-PS-CCT High Bay in both indoor and outdoor environments. The sensor dims the light from high to low based on movement. This slim, low-profile sensor is designed for installation inside the bottom of a light fixture body.

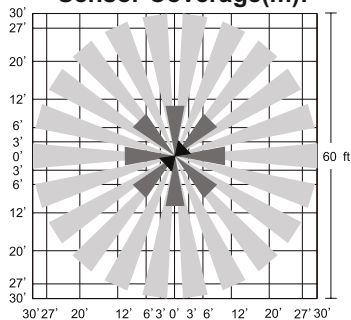
The sensor uses microwave sensing technology that reacts to changes in movement within the coverage area. Once the sensor stops detecting movement and the time delay elapses, the lights will go from high to low mode and eventually to an OFF position if it is desired. Sensors must directly "see" the motion of a person or moving object to detect them, so careful consideration must be given to sensor luminaire placement and lens selection. Avoid placing the sensor where obstructions may block the sensor's line of sight.

Specifications:

Operating Voltage	12~24Vdc
Max. Current Sink	50mA±5%
HF System	5.8GHz±75MHz
Transmission Power	<0.2mW
Dim Control Output	0-10V
Detection Radius	20%/50%/75%/100%(1-8m)
Mounting Height	Max 50ft.(15meters)
Time Setting	10s/1min/5min/10min/15min/20min/30min/60min
Light-control	24H/10LUX/30LUX/50LUX
Temperature	-4°F - +140°F (-20°C ~ +60°C)
IP Rating	IP65

- Attention:**
- When first connected, the sensor has a warm-up time of 15 seconds. After the sensor is connected to power, the light will stay on for 15 seconds, then go to dimming and then to normal function.
 - The sensor setting can be changed only by using the optional remote control. When any setting is changed through the remote control, the light will flash once.
 - The **Factory Default Settings** of the sensor are:
 - 100% sensitivity
 - 5 minutes time setting
 - Max daylight sensor
 - Dimming level 30%
 - Dimming time 60 minutes

Sensor Coverage(m):



Coverage Side View(m):

