

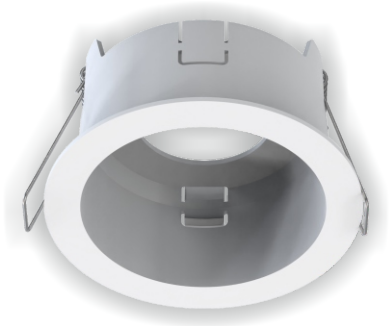


KRCP - Kinetic Wireless Recessed and Surface Mounted PIR Sensor

The KRCP Kinetic ceiling PIR can be installed surface mounted or recessed. It is powered by a CR123A battery (included) and can also be powered by an AC 200-240V power supply.

Once the ceiling PIR is paired with a Kinetic wireless receiver, it can turn ON the light/load by wireless control after sensing a person and turn OFF the light/load when the person leaves the area.

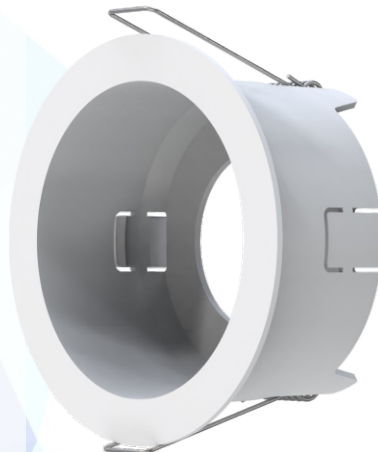
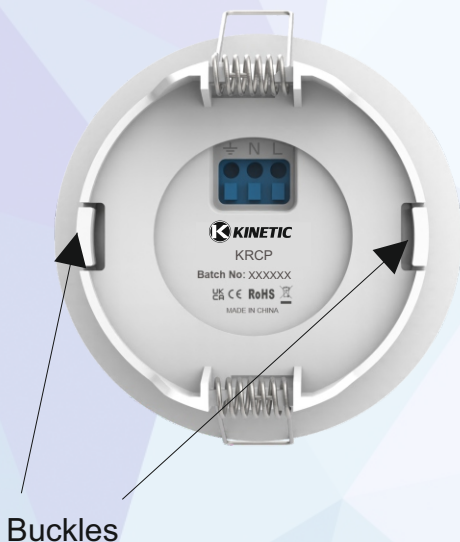
It is suitable for home, classroom, office, warehouse or other places where automatic control of the lights is needed.



KRCP

Recessed & Surface Mounted Installation:

The PIR can be separated from the recessed base for surface mounted installation by pressing the buckles at both ends of the base to detach it.



Detach the Surface Mounted PIR from the base

KRCP PIR Specifications:

Switch Type	PIR Sensor
Power Supply	1 x CR123A Battery (included) or/and 200-240V/AC
Battery Life	Up to 2 years (Red LED indicator for low battery)
Communicating Frequency	RF 433Mhz
Control Distance	up to 30m
Control Method	Pairing with Kinetic Receiving Controllers
Weatherproof Level	IP20 (Indoor Use Only)
Sensitivity Range (adjustable)	up to Ø8m
Lux Level (adjustable)	10 - 2000lux
Time Range (adjustable)	3sec to 30min
Operating Temperature	-10°C ~ +50°C
Installation Height	2.4 to 3.6 m (8 to 12 feet)
Detection Angle	360°
Coverage Area:	30m ² (324ft ²) to 62m ² (676ft ²)
Installation Method	Recessed Installation (cut-out Ø75mm) or Surface Mounted
Warranty	3 Years

Key Functions:



Dimensions:

