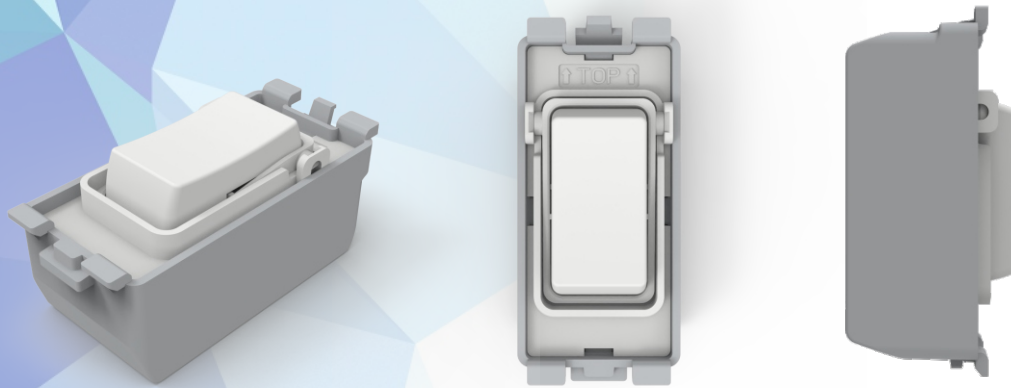


Quinetic Wireless Grid Switch

BG R Range Nexus Grid Compatible



Interchangeable
Switch cover

Innovation of Wireless Kinetic Technology

The Quinetic wireless grid switch is compatible with BG R range Nexus grid system and can be installed into BG Nexus grid plates. The switch cover is interchangeable, allowing the usage of any BG R Range Nexus Grid switch cover. It can be used with the standard or with the dimming Quinetic receiving controller. It has a built-in micro energy generator - when the switch is pressed the kinetic system transforms the movement into energy. This transmits a signal to the receiver to turn the lamp or other load on or off.

No Wiring. No Battery. Easy Installation and Usage.

The grid switch can be used from a maximum 30m indoors. There is no longer a need to make holes or channel out for switch lines in the wall if you use the Quinetic wireless switch. The Quinetic switch is safe, convenient and extremely simple to install and use.

Collection of Micro Mechanical Energy

Micro energy acquisition (MEA) module constantly generates energy, thus eliminating the need for a battery or mains power supply.



Press switch to produce kinetic energy.



Internal module collects kinetic energy.



Kinetic energy is converted into electricity.



Communication module transmits signal.



Receiver controls the light.



Self Powered



No Radiation



No Maintenance



No Wiring



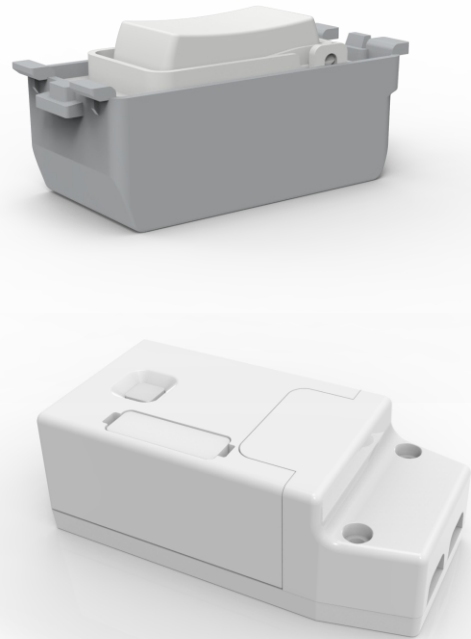
Durable



Cost Saving

Kinetic Wireless Switch Specifications:

- Work Type:** Push Button
- Power Source:** Micro Energy Acquisition and self-powered
- Communication Model:** FSK
- Work Frequency:** 433Hz
- Number of Keys:** 1 (1 gang)
- Life Time:** 200,000 times on/off
- Weight:** 25g
- Work Environment Temperature:** -20°C ~ 55°C
- Control Distance:** 30m (indoor)
- Control Method:** Pairing with Kinetic Wireless Controller
- Compatible with BG R Range Nexus Switch Plates**
- 3 Year Warranty**



Use with Kinetic wireless receiving controllers

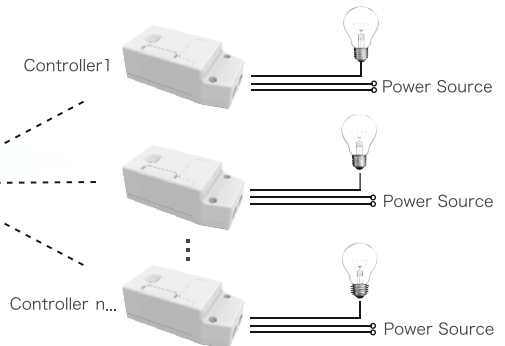
Kinetic Controller Wireless Systems

The wireless Kinetic grid switch and wireless receiving controller can be paired with any combination: a controller can be controlled by a maximum of 10 separate switches, a switch can pair an unlimited number of controllers.

1-Way Wireless System

Single-Multi-Control

Kinetic Wireless Switch

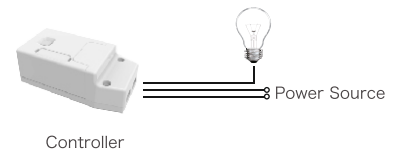


2-Way Wireless System

Dual Control

Kinetic Wireless Switch 1

Kinetic Wireless Switch 2



3-Way Wireless System

Multi-Single-Control

Kinetic Wireless Switch 1

Kinetic Wireless Switch 2

Kinetic Wireless Switch 10

