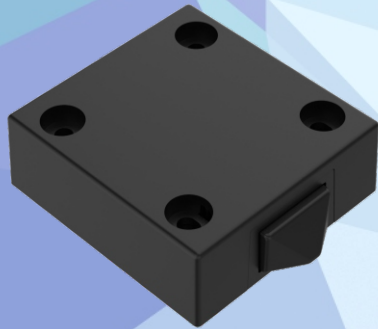


The Kinetic wireless door switch was designed for a easy trigger of lights when a door system is opened or closed. Simply pair the door contact switch with the Kinetic wireless receiver, to control the lights inside the cabinets sliding doors, drawers, etc.



**KDSB**



**KDSW**



## Innovation of Wireless Kinetic Technology

The Kinetic wireless door switch can be used in conjunction with the standard Kinetic receiving controller. It has a built-in micro energy generator - when the switch is pressed the kinetic system transforms the movement into energy. This transmits a signal to the receiver to turn the lamp or other load on or off. This solves the issue of having to install switch wiring which has been a problem ever since the invention of the lamp.

## No Wiring. No Battery. Easy Installation and Usage.

The door switch can be used from a maximum 25m indoors. There is no longer a need to make holes or channel out for switch lines in the wall if you use the Kinetic wireless switch. The Kinetic switch is safe, convenient and extremely simple to install and use.

## Collection of Micro Mechanical Energy

Micro energy acquisition (MEA) module constantly generates energy, thus eliminating the need for a battery or mains power supply.



Press switch to produce kinetic energy.



Internal module collects kinetic energy.



Kinetic energy is converted into electricity.



Communication module transmits signal.



Receiver controls the light.

## Low power hardware and highly reliable communication protocol

Energy produced by the Kinetic device is very small, so the communicating hardware adheres to strict requirements on low power consumption, wireless transmission and creates a highly stable environment.

To prevent interference the handshake protocol is integrated with a precise algorithm, a 32-bit address. At every interval communication protocols are sent three times.



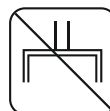
Self Powered



No Radiation



No Maintenance



No Wiring



Durable



Cost Saving

## Kinetic Door Wireless Switch Specifications:

**Work Type:** Push Button

**Power Source:** Micro Energy Acquisition and self-powered

**Communication Model:** FSK

**Work Frequency:** RF 433MHz

**Number of Keys:** 1 (1 gang)

**Life Time:** ≥100000 times

**Work Environment Temperature:** -20°C ~ 55°C

**Control Distance:** 25m (indoor) 80m (outdoor)

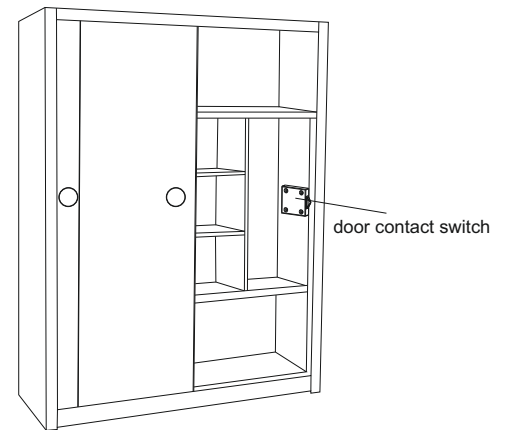
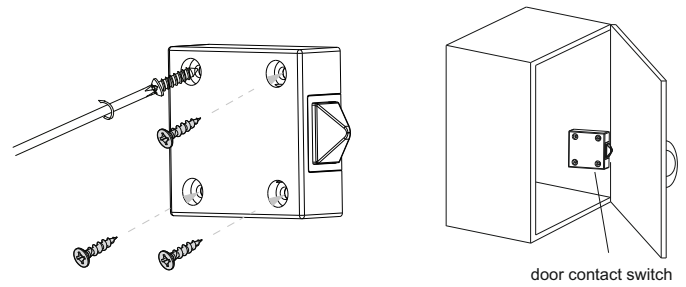
**Control Method:** Pairing with Kinetic Wireless Controller

**Shell material:** PC

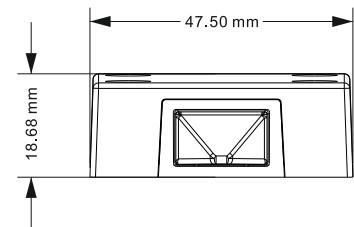
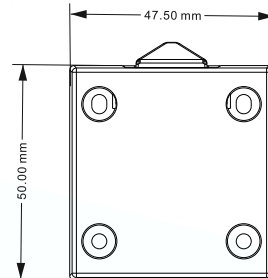
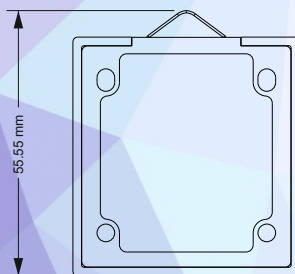
**Installation method:** Surface mounted with screws

**3 Year Warranty**

## Installation method:

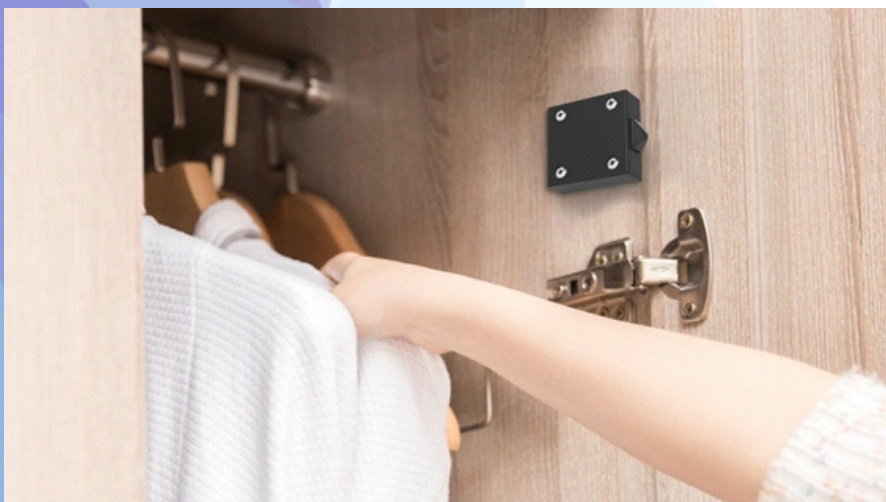


## Dimensions:



## Kinetic Controller Wireless Systems

The wireless Kinetic door switch and wireless receiving controller can be paired with any combination: a controller can be controlled by a maximum of 10 separate switches, a switch can pair an unlimited number of controllers.



Use with Kinetic wireless receiving controllers