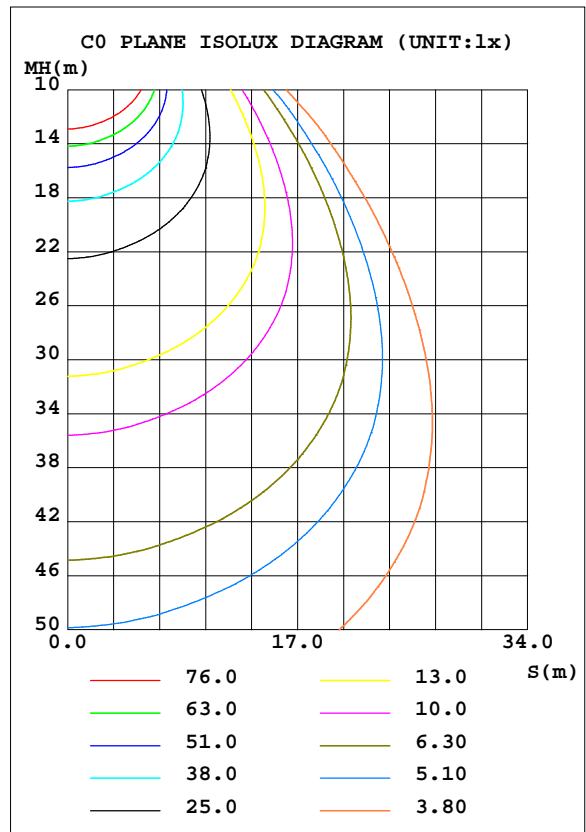
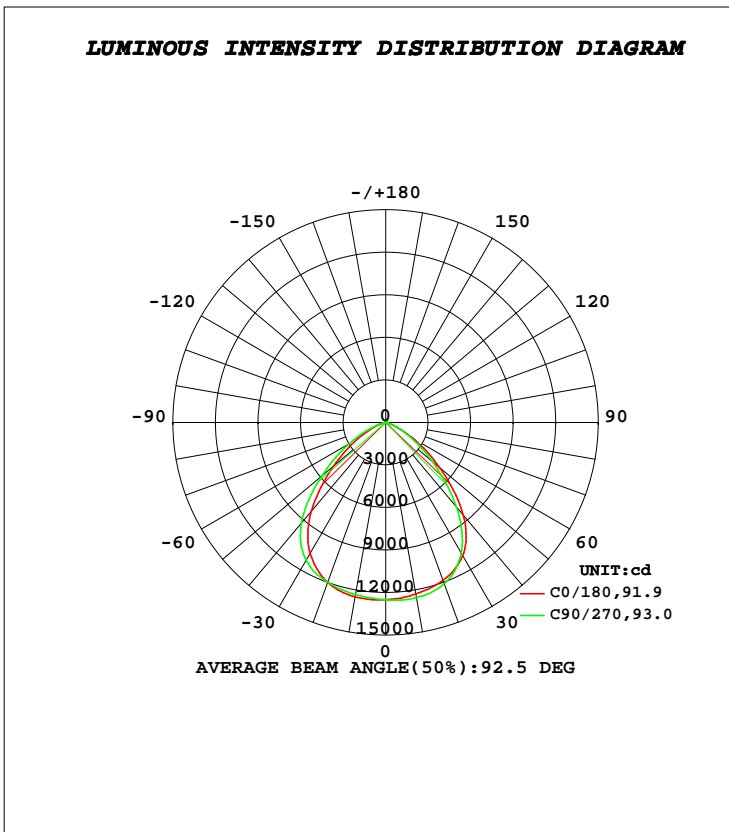


LUMINAIRE PHOTOMETRIC TEST REPORT

Test:U:229.46V I:1.2598A P:288.30W PF:0.9973 Freq:50.00Hz Lamp Flux:26384.3x1 lm		
NAME:	TYPE:LED	WEIGHT:
SPEC.:	DIM.:	SERIAL No.:1
MFR.:	SUR.:	Shielding Angle:

DATA OF LAMP		PHOTOMETRIC DATA				Eff: 91.52 lm/W
MODEL	1	I _{max} (cd)	12595	S/MH(C0/180)	1.25	
NOMINAL POWER(W)	275	LOR(%)	100.0	S/MH(C90/270)	1.32	
RATED VOLTAGE(V)	230	TOTAL FLUX(lm)	26384	η UP, DN(C0-180)	0.4, 47.0	
NOMINAL FLUX(lm)	26384.3	CIE CLASS	DIRECT	η UP, DN(C180-360)	0.4, 52.1	
LAMPS INSIDE	1	η up(%)	0.8	CIBSE SHR NOM	1.25	
TEST VOLTAGE(V)	230	η down(%)	99.2	CIBSE SHR MAX	1.30	



C Range: 0 - 360DEG
C Interval: 22.5DEG
Test Speed: HIGH
Temperature: 25.3DEG
Operators: DAMIN
Test Date: 2021-02-26

γ Range: 0 - 180DEG
γ Interval: 1.0DEG
Test System: EVERFINE GO-2000A_V1 SYSTEM V2.0.407.13
Humidity: 65.0%
Test Distance: 6.590m [K=1.0000]
Remarks:

ZONAL FLUX DIAGRAM

ZONAL FLUX DIAGRAM:

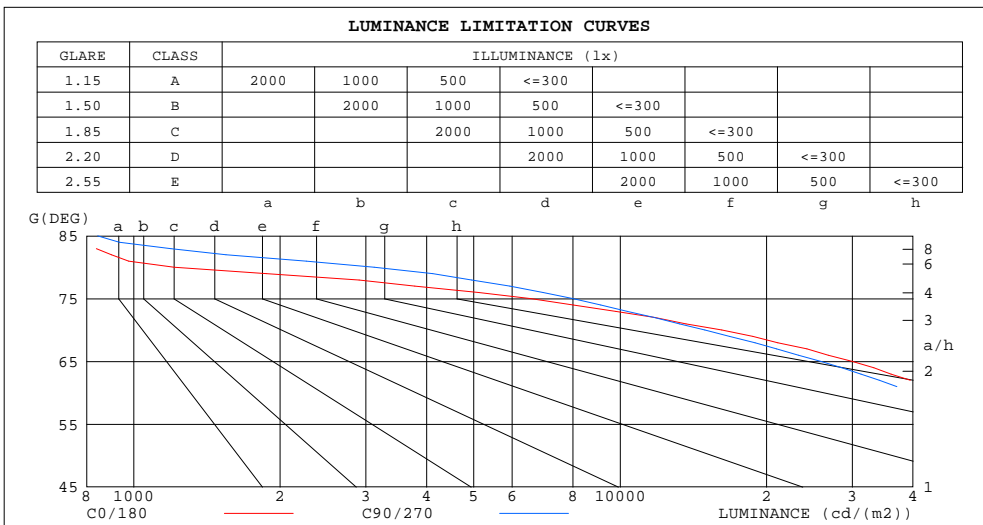
γ	C0	C45	C90	C135	C180	C225	C270	C315	γ	Φ zone	Φ total	%lum,lamp
10	1228	1246	1255	1253	1248	1243	1232	1230	0- 10	1190	1190	4.51,4.51
20	1186	1200	1210	1197	1199	1201	1198	1190	10- 20	3462	4652	17.6,17.6
30	1086	1071	1065	1034	1066	1090	1123	1111	20- 30	5292	9945	37.7,37.7
40	851.0	805.1	777.4	746.9	815.1	861.9	924.6	913.1	30- 40	6070	16015	60.7,60.7
50	500.3	466.8	433.9	419.2	480.7	537.1	589.8	583.9	40- 50	5136	21151	80.2,80.2
60	219.1	213.9	188.2	189.3	221.5	267.2	290.1	293.0	50- 60	3193	24344	92.3,92.3
70	51.10	66.84	47.89	63.77	63.10	96.60	87.33	101.8	60- 70	1437	25781	97.7,97.7
80	1.941	5.000	5.084	6.306	5.463	12.36	9.372	11.23	70- 80	364.2	26145	99.1,99.1
90	0.4321	0.5142	0.5408	0.5413	0.3326	0.3514	0.3092	0.3167	80- 90	21.49	26167	99.2,99.2
100	0.9656	1.102	1.203	1.179	0.8122	0.7824	0.7309	0.7167	90-100	7.025	26174	99.2,99.2
110	1.873	2.060	2.238	2.191	1.704	1.604	1.532	1.474	100-110	14.31	26188	99.3,99.3
120	3.052	3.273	3.494	3.437	2.894	2.752	2.663	2.571	110-120	23.83	26212	99.3,99.3
130	4.304	4.562	4.763	4.709	4.145	4.031	3.942	3.851	120-130	32.65	26245	99.5,99.5
140	5.477	5.754	5.937	5.882	5.280	5.258	5.171	5.106	130-140	37.76	26282	99.6,99.6
150	6.528	6.848	7.027	6.921	6.372	6.343	6.311	6.243	140-150	37.77	26320	99.8,99.8
160	7.623	7.900	8.020	7.914	7.553	7.413	7.394	7.338	150-160	32.76	26353	99.9,99.9
170	8.667	8.750	8.712	8.686	8.650	8.429	8.361	8.382	160-170	22.92	26376	100,100
180	9.095	8.972	8.885	8.917	9.117	9.000	8.911	8.938	170-180	8.362	26384	100,100
DEG	LUMINOUS INTENSITY:×10cd									UNIT:lm		

C Range: 0 - 360DEG
C Interval: 22.5DEG
Test Speed: HIGH
Temperature:25.3DEG
Operators:DAMIN
Test Date:2021-02-26

γ Range: 0 - 180DEG
 γ Interval: 1.0DEG
Test System:EVERFINE GO-2000A_V1 SYSTEM V2.0.407.13
Humidity:65.0%
Test Distance:6.590m [K=1.0000]
Remarks:

LUMINANCE LIMITATION CURVES

Test:U:229.46V I:1.2598A P:288.30W PF:0.9973 Freq:50.00Hz Lamp Flux:26384.3x1 lm		
NAME:	TYPE:LED	WEIGHT:
SPEC.:	DIM.:	SERIAL No.:1
MFR.:	SUR.:	Shielding Angle:



LUMINANCE cd/(m2)		
G(DEG)	C0/180	C90/270
85	759	843
80	1210	3122
75	6546	7992
70	16177	14928
65	29962	25821
60	47442	40122
55	65873	55167
50	84273	71973
45	103446	90374

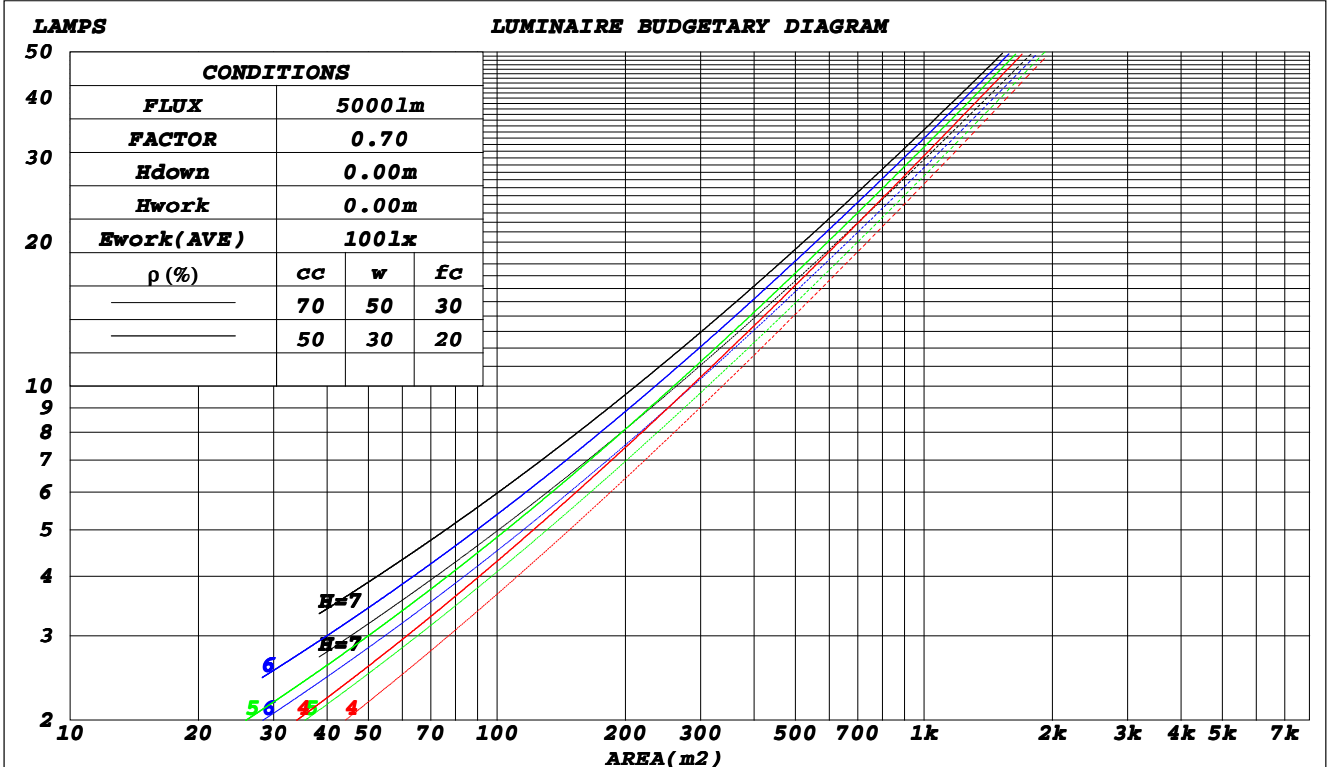
C Range: 0 - 360DEG
C Interval: 22.5DEG
Test Speed: HIGH
Temperature: 25.3DEG
Operators: DAMIN
Test Date: 2021-02-26

γ Range: 0 - 180DEG
γ Interval: 1.0DEG
Test System: EVERFINE GO-2000A_V1 SYSTEM V2.0.407.13
Humidity: 65.0%
Test Distance: 6.590m [K=1.0000]
Remarks:

CU AND LUMINAIRE BUDGETARY ESTIMATE DIAGRAM

Test:U:229.46V I:1.2598A P:288.30W PF:0.9973 Freq:50.00Hz Lamp Flux:26384.3x1 lm		
NAME:	TYPE:LED	WEIGHT:
SPEC.:	DIM.:	SERIAL No.:1
MFR.:	SUR.:	Shielding Angle:

ρ_{cc}	80%			70%			50%			30%			10%			0
ρ_w	50%	30%	10%	50%	30%	10%	50%	30%	10%	50%	30%	10%	50%	30%	10%	0
ρ_{fc}	20%			20%			20%			20%			20%			0
RCR	RCR:Room Cavity Ratio						Coefficients of Utilization(CU)									
0.0	1.19	1.19	1.19	1.16	1.16	1.16	1.11	1.11	1.11	1.06	1.06	1.06	1.01	1.01	1.01	.99
1.0	1.07	1.04	1.01	1.05	1.02	.99	1.01	.98	.96	.97	.95	.93	.93	.92	.90	.88
2.0	.96	.91	.86	.95	.90	.85	.91	.87	.83	.88	.84	.81	.85	.82	.79	.77
3.0	.87	.80	.74	.85	.79	.74	.82	.77	.72	.79	.75	.71	.77	.73	.70	.68
4.0	.78	.71	.65	.77	.70	.64	.74	.68	.64	.72	.67	.63	.70	.65	.62	.60
5.0	.71	.63	.57	.70	.62	.57	.68	.61	.56	.66	.60	.56	.64	.59	.55	.53
6.0	.64	.57	.51	.63	.56	.51	.62	.55	.50	.60	.54	.50	.58	.53	.49	.47
7.0	.59	.51	.46	.58	.51	.45	.57	.50	.45	.55	.49	.45	.54	.48	.44	.43
8.0	.54	.46	.41	.53	.46	.41	.52	.45	.41	.51	.45	.40	.50	.44	.40	.38
9.0	.50	.42	.37	.49	.42	.37	.48	.42	.37	.47	.41	.37	.46	.41	.37	.35
10.0	.46	.39	.34	.46	.39	.34	.45	.38	.34	.44	.38	.34	.43	.37	.33	.32



C Range: 0 - 360DEG
 C Interval: 22.5DEG
 Test Speed: HIGH
 Temperature: 25.3DEG
 Operators: DAMIN
 Test Date: 2021-02-26

γ Range: 0 - 180DEG
 γ Interval: 1.0DEG
 Test System: EVERFINE GO-2000A_V1 SYSTEM V2.0.407.13
 Humidity: 65.0%
 Test Distance: 6.590m [K=1.0000]
 Remarks:

WEC AND CCEC

Test:U:229.46V I:1.2598A P:288.30W PF:0.9973 Freq:50.00Hz Lamp Flux:26384.3x1 lm		
NAME:	TYPE:LED	WEIGHT:
SPEC.:	DIM.:	SERIAL No.:1
MFR.:	SUR.:	Shielding Angle:

ρ_{cc}	80%			70%			50%			30%			10%			0
ρ_w	50%	30%	10%	50%	30%	10%	50%	30%	10%	50%	30%	10%	50%	30%	10%	0
ρ_{fc}	20%			20%			20%			20%			20%			0
RCR	RCR:Room Cavity Ratio						Wall Exitance Coefficients(WEC)									
0.0																
1.0	.237	.135	.043	.230	.131	.042	.217	.124	.040	.204	.118	.038	.193	.112	.036	
2.0	.233	.127	.039	.226	.125	.038	.215	.119	.037	.204	.114	.036	.194	.110	.035	
3.0	.222	.118	.035	.217	.116	.035	.207	.112	.034	.197	.108	.033	.188	.104	.032	
4.0	.210	.109	.032	.206	.108	.032	.197	.104	.031	.188	.101	.030	.180	.098	.030	
5.0	.199	.101	.029	.194	.100	.029	.186	.097	.029	.179	.094	.028	.172	.092	.028	
6.0	.187	.094	.027	.184	.093	.027	.177	.090	.026	.170	.088	.026	.164	.086	.026	
7.0	.177	.088	.025	.174	.086	.025	.167	.085	.024	.161	.083	.024	.156	.081	.024	
8.0	.167	.082	.023	.164	.081	.023	.159	.079	.023	.153	.078	.022	.148	.076	.022	
9.0	.158	.077	.021	.156	.076	.021	.151	.074	.021	.146	.073	.021	.141	.072	.021	
10.0	.150	.072	.020	.148	.071	.020	.143	.070	.020	.139	.069	.020	.134	.068	.019	

ρ_{cc}	80%			70%			50%			30%			10%			0
ρ_w	50%	30%	10%	50%	30%	10%	50%	30%	10%	50%	30%	10%	50%	30%	10%	0
ρ_{fc}	20%			20%			20%			20%			20%			0
RCR	RCR:Room Cavity Ratio						Ceiling Cavity Exitance Coefficients(CCEC)									
0.0	.197	.197	.197	.168	.168	.168	.115	.115	.115	.066	.066	.066	.021	.021	.021	
1.0	.182	.163	.146	.155	.140	.126	.106	.096	.087	.061	.056	.051	.020	.018	.016	
2.0	.171	.139	.112	.146	.119	.096	.100	.083	.067	.058	.048	.039	.019	.016	.013	
3.0	.162	.120	.087	.139	.104	.076	.095	.072	.053	.055	.042	.031	.018	.014	.010	
4.0	.154	.107	.071	.132	.092	.061	.091	.064	.043	.052	.038	.026	.017	.012	.008	
5.0	.147	.096	.058	.126	.083	.051	.087	.058	.036	.050	.034	.021	.016	.011	.007	
6.0	.140	.087	.049	.120	.076	.043	.083	.053	.030	.048	.031	.018	.016	.010	.006	
7.0	.134	.080	.043	.115	.069	.037	.079	.049	.026	.046	.029	.016	.015	.009	.005	
8.0	.128	.074	.038	.110	.064	.033	.076	.045	.023	.044	.027	.014	.014	.009	.005	
9.0	.122	.069	.034	.106	.060	.029	.073	.042	.021	.043	.025	.012	.014	.008	.004	
10.0	.117	.065	.030	.101	.057	.027	.070	.040	.019	.041	.024	.011	.013	.008	.004	

C Range: 0 - 360DEG
 C Interval: 22.5DEG
 Test Speed: HIGH
 Temperature:25.3DEG
 Operators:DAMIN
 Test Date:2021-02-26

γ Range: 0 - 180DEG
 γ Interval: 1.0DEG
 Test System:EVERFINE GO-2000A_V1 SYSTEM V2.0.407.13
 Humidity:65.0%
 Test Distance:6.590m [K=1.0000]
 Remarks:

UGR(Unified Glare Rating) Table

Test:U:229.46V I:1.2598A P:288.30W PF:0.9973 Freq:50.00Hz Lamp Flux:26384.3x1 lm										
NAME:			TYPE:LED			WEIGHT:				
SPEC.:			DIM.:			SERIAL No.:1				
MFR.:			SUR.:			Shielding Angle:				
ceiling/cavity	0.7	0.7	0.5	0.5	0.3	0.7	0.7	0.5	0.5	0.3
walls	0.5	0.3	0.5	0.3	0.3	0.5	0.3	0.5	0.3	0.3
working plane	0.2	0.2	0.2	0.2	0.2	0.2	0.2	0.2	0.2	0.2
Room dimensions	Viewed crosswise					Viewed endwise				
x = 2H y = 2H	15.2	16.5	15.5	16.7	16.9	14.7	16.0	15.0	16.2	16.4
3H	15.3	16.5	15.6	16.8	17.0	14.8	16.0	15.1	16.2	16.5
4H	15.3	16.4	15.6	16.6	16.9	14.7	15.9	15.1	16.1	16.4
6H	15.2	16.2	15.5	16.5	16.8	14.7	15.7	15.0	16.0	16.3
8H	15.1	16.1	15.5	16.4	16.7	14.6	15.6	15.0	15.9	16.2
12H	15.1	16.0	15.4	16.3	16.6	14.6	15.5	14.9	15.8	16.1
4H 2H	15.3	16.4	15.6	16.7	16.9	14.8	15.9	15.1	16.2	16.5
3H	15.4	16.4	15.8	16.7	17.0	15.0	16.0	15.3	16.3	16.6
4H	15.4	16.3	15.8	16.6	16.9	15.0	15.8	15.3	16.2	16.5
6H	15.3	16.1	15.7	16.4	16.8	14.9	15.7	15.3	16.0	16.4
8H	15.3	16.0	15.7	16.3	16.7	14.9	15.6	15.3	15.9	16.3
12H	15.2	15.9	15.7	16.3	16.7	14.8	15.5	15.2	15.8	16.3
8H 4H	15.3	16.0	15.7	16.4	16.8	14.9	15.6	15.3	16.0	16.4
6H	15.2	15.8	15.7	16.2	16.7	14.8	15.4	15.3	15.8	16.2
8H	15.2	15.7	15.6	16.1	16.6	14.8	15.3	15.2	15.7	16.2
12H	15.1	15.6	15.6	16.0	16.5	14.7	15.2	15.2	15.6	16.1
12H 4H	15.3	15.9	15.7	16.3	16.7	14.8	15.5	15.3	15.9	16.3
6H	15.2	15.7	15.6	16.1	16.6	14.8	15.3	15.2	15.7	16.2
8H	15.1	15.6	15.6	16.0	16.5	14.7	15.2	15.2	15.6	16.1
Variations with the observer position at spacings:										
S = 1.0H	+ 1.0 / - 1.4					+ 1.1 / - 1.6				
1.5H	+ 0.6 / - 0.8					+ 0.6 / - 0.8				
2.0H	+ 2.2 / - 2.7					+ 2.1 / - 2.2				

CIE Pub.117, 26384 lm Total Lamp Luminous Flux Correct (8log(F/F0) = 11.4)
 Area: 0.0936 m2

C Range: 0 - 360DEG
C Interval: 22.5DEG
Test Speed: HIGH
Temperature:25.3DEG
Operators:DAMIN
Test Date:2021-02-26

γ Range: 0 - 180DEG
γ Interval: 1.0DEG
Test System:EVERFINE GO-2000A_V1 SYSTEM V2.0.407.13
Humidity:65.0%
Test Distance:6.590m [K=1.0000]
Remarks:

UTILIZATION FACTORS TABLE

Test:U:229.46V I:1.2598A P:288.30W PF:0.9973 Freq:50.00Hz Lamp Flux:26384.3x1 lm		
NAME:	TYPE:LED	WEIGHT:
SPEC.:	DIM.:	SERIAL No.:1
MFR.:	SUR.:	Shielding Angle:

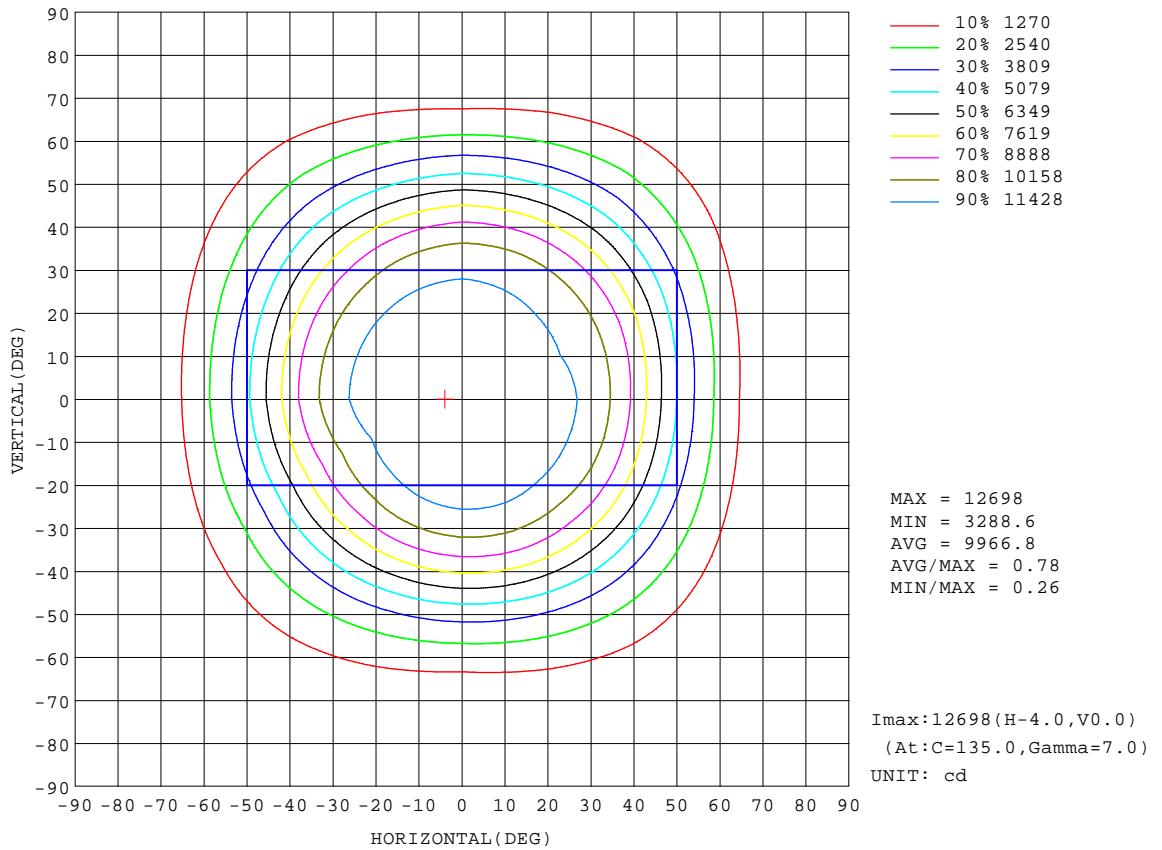
REFLECTANCE										
Ceiling	0.8	0.8	0.8	0.7	0.7	0.7	0.5	0.5	0.5	0
Walls	0.7	0.5	0.3	0.7	0.5	0.3	0.7	0.5	0.3	0
Working plane	0.2	0.2	0.2	0.2	0.2	0.2	0.2	0.2	0.2	0
ROOM INDEX	UTILIZATION FACTORS(PERCENT) $k(RI) \times RCR = 5$									
k = 0.60	67	57	51	66	56	50	65	56	50	45
0.80	77	67	61	76	67	61	74	66	60	54
1.00	85	76	70	84	75	70	82	76	69	63
1.25	91	83	77	90	82	77	88	81	76	70
1.50	96	88	83	94	87	82	91	85	81	75
2.00	101	95	90	99	94	89	96	91	87	81
2.50	104	98	94	102	97	93	99	94	91	83
3.00	107	101	97	105	100	96	101	97	94	86
4.00	110	105	102	107	104	100	103	100	98	89
5.00	111	108	105	109	106	103	105	102	100	91
ROOM INDEX	UF(total)									Direct
According to DIN EN 13032-2 2004			Suspended				SHRNOM = 1.25			

C Range: 0 - 360DEG
C Interval: 22.5DEG
Test Speed: HIGH
Temperature:25.3DEG
Operators:DAMIN
Test Date:2021-02-26

γ Range: 0 - 180DEG
 γ Interval: 1.0DEG
Test System:EVERFINE GO-2000A_V1 SYSTEM V2.0.407.13
Humidity:65.0%
Test Distance:6.590m [K=1.0000]
Remarks:

ISOCANDELA DIAGRAM

Test:U:229.46V I:1.2598A P:288.30W PF:0.9973 Freq:50.00Hz Lamp Flux:26384.3x1 lm		
NAME:	TYPE:LED	WEIGHT:
SPEC.:	DIM.:	SERIAL No.:1
MFR.:	SUR.:	Shielding Angle:



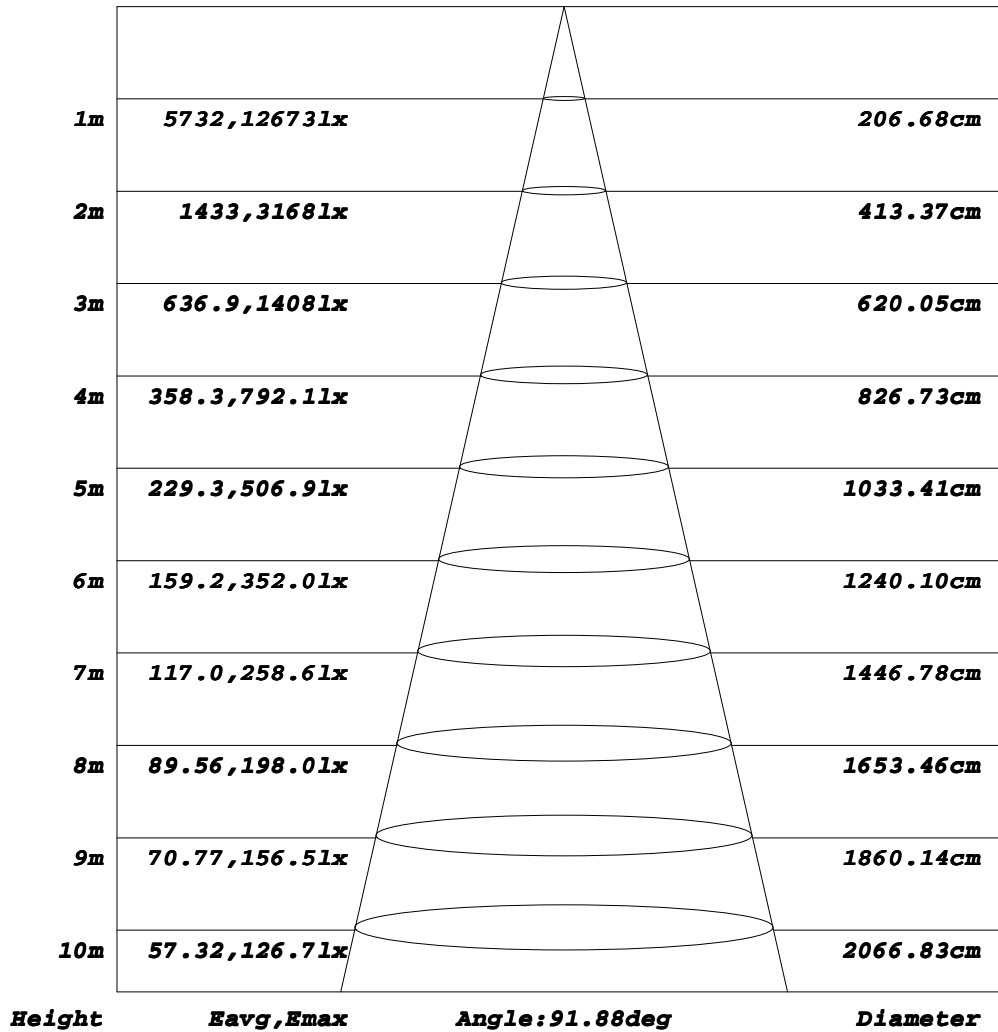
C Range: 0 - 360DEG
C Interval: 22.5DEG
Test Speed: HIGH
Temperature:25.3DEG
Operators:DAMIN
Test Date:2021-02-26

γ Range: 0 - 180DEG
γ Interval: 1.0DEG
Test System:EVERFINE GO-2000A_V1 SYSTEM V2.0.407.13
Humidity:65.0%
Test Distance:6.590m [K=1.0000]
Remarks:

AAI Figure

Test:U:229.46V I:1.2598A P:288.30W PF:0.9973 Freq:50.00Hz Lamp Flux:26384.3x1 lm		
NAME:	TYPE:LED	WEIGHT:
SPEC.:	DIM.:	SERIAL No.:1
MFR.:	SUR.:	Shielding Angle:

Flux out:19310 lm



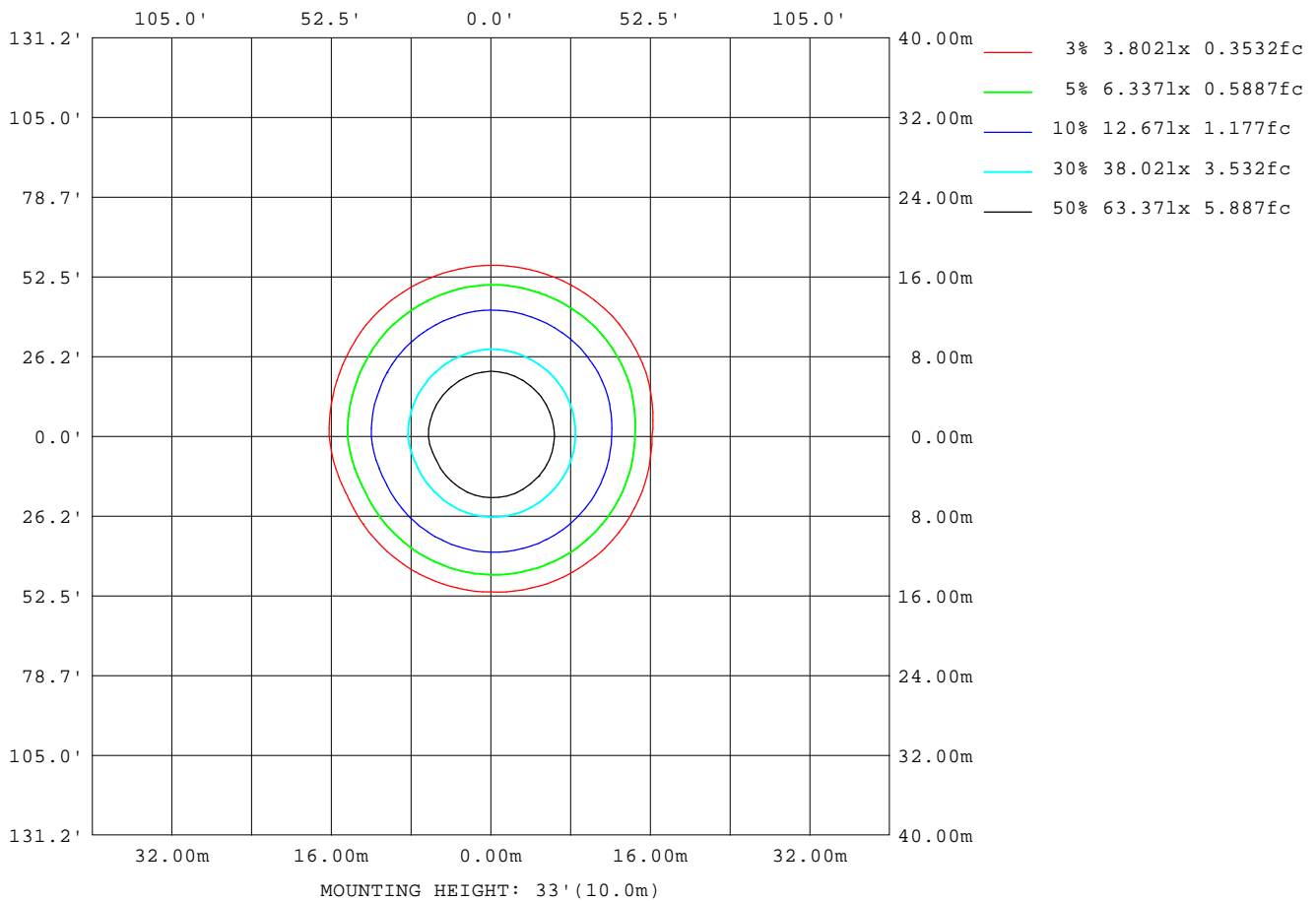
Note: The Curves indicate the illuminated area and the average illumination when the luminaire is at different distance.

C Range: 0 - 360DEG
 C Interval: 22.5DEG
 Test Speed: HIGH
 Temperature: 25.3DEG
 Operators: DAMIN
 Test Date: 2021-02-26

γ Range: 0 - 180DEG
 γ Interval: 1.0DEG
 Test System: EVERFINE GO-2000A_V1 SYSTEM V2.0.407.13
 Humidity: 65.0%
 Test Distance: 6.590m [K=1.0000]
 Remarks:

ISOLUX DIAGRAM

Test:U:229.46V I:1.2598A P:288.30W PF:0.9973 Freq:50.00Hz Lamp Flux:26384.3x1 lm		
NAME:	TYPE:LED	WEIGHT:
SPEC.:	DIM.:	SERIAL No.:1
MFR.:	SUR.:	Shielding Angle:



C Range: 0 - 360DEG
C Interval: 22.5DEG
Test Speed: HIGH
Temperature: 25.3DEG
Operators: DAMIN
Test Date: 2021-02-26

γ Range: 0 - 180DEG
γ Interval: 1.0DEG
Test System: EVERFINE GO-2000A_V1 SYSTEM V2.0.407.13
Humidity: 65.0%
Test Distance: 6.590m [K=1.0000]
Remarks:

LED Avg.L Report

Test:U:229.46V I:1.2598A P:288.30W PF:0.9973 Freq:50.00Hz Lamp Flux:26384.3x1 lm		
NAME:	TYPE:LED	WEIGHT:
SPEC.:	DIM.:	SERIAL No.:1
MFR.:	SUR.:	Shielding Angle:

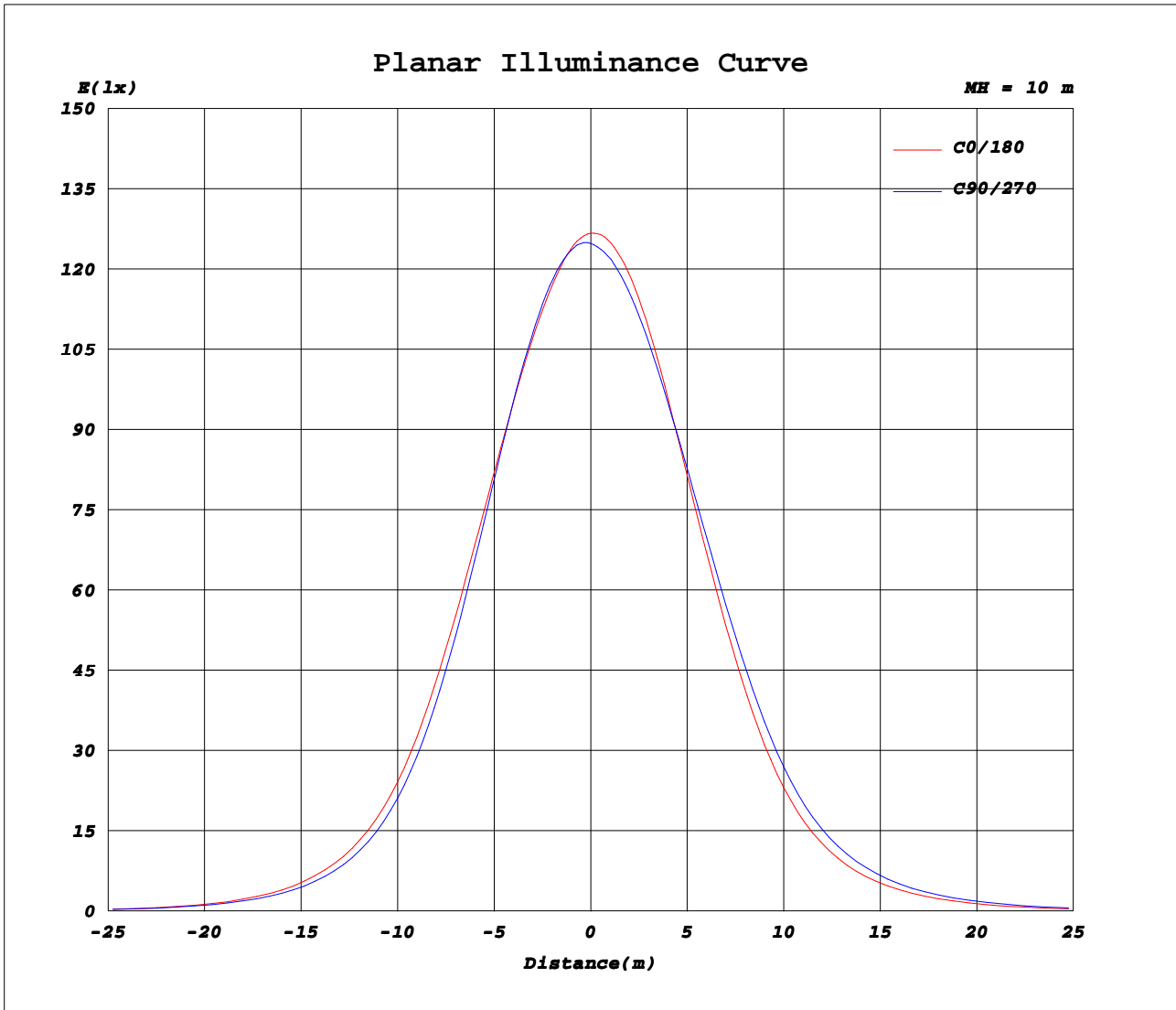
AvgL	cd/m2
L_0~180(65)av	30991
L_0~180(75)av	8450
L_0~180(85)av	926
L_90~270(65)av	35065
L_90~270(75)av	11229
L_90~270(85)av	1087
L_45(65)av	38192
L_45(75)av	15043
L_45(85)av	1266

Standard: GB/T 29293-2012

C Range: 0 - 360DEG
C Interval: 22.5DEG
Test Speed: HIGH
Temperature:25.3DEG
Operators:DAMIN
Test Date:2021-02-26

γ Range: 0 - 180DEG
γ Interval: 1.0DEG
Test System:EVERFINE GO-2000A_V1 SYSTEM V2.0.407.13
Humidity:65.0%
Test Distance:6.590m [K=1.0000]
Remarks:

Planar Illuminance Curve



C Range: 0 - 360DEG
C Interval: 22.5DEG
Test Speed: HIGH
Temperature: 25.3DEG
Operators: DAMIN
Test Date: 2021-02-26

γ Range: 0 - 180DEG
γ Interval: 1.0DEG
Test System: EVERFINE GO-2000A_V1 SYSTEM V2.0.407.13
Humidity: 65.0%
Test Distance: 6.590m [K=1.0000]
Remarks:

LUMINOUS DISTRIBUTION INTENSITY DATA

Test:U:229.46V I:1.2598A P:288.30W PF:0.9973 Freq:50.00Hz Lamp Flux:26384.3x1 lm		
NAME:	TYPE:LED	WEIGHT:
SPEC.:	DIM.:	SERIAL No.:1
MFR.:	SUR.:	Shielding Angle:

Table--1

UNIT: x10cd

C (DEG) \ γ (DEG)	0	22.5	45	67.5	90	112.5	135	157.5	180	202.5	225	247.5	270	292.5	315	337.5			
0	1251	1251	1251	1251	1251	1251	1251	1251	1251	1251	1251	1251	1251	1251	1251	1251			
5	1243	1247	1252	1253	1257	1258	1259	1257	1253	1252	1250	1245	1242	1241	1240	1241			
10	1228	1237	1246	1251	1255	1254	1253	1251	1248	1244	1243	1234	1232	1227	1230	1230			
15	1211	1221	1229	1241	1241	1243	1234	1230	1232	1229	1224	1223	1219	1216	1212	1213			
20	1186	1190	1200	1208	1210	1207	1197	1190	1199	1198	1201	1201	1198	1196	1190	1189			
25	1147	1146	1148	1155	1154	1144	1130	1128	1145	1148	1157	1165	1171	1167	1159	1157			
30	1086	1078	1071	1071	1065	1049	1034	1036	1066	1073	1090	1106	1123	1117	1111	1107			
35	991	978	955	952	938	921	902	914	959	973	993	1021	1044	1043	1034	1030			
40	851	831	805	792	777	758	747	760	815	835	862	893	925	922	913	904			
45	676	655	631	614	599	582	575	587	645	668	702	730	765	759	755	739			
50	500	483	467	448	434	421	419	427	481	501	537	560	590	586	584	562			
55	349	335	325	310	297	290	289	293	337	356	389	408	431	428	426	401			
60	219	213	214	201	188	189	189	190	221	240	267	280	290	295	293	270			
65	117	123	130	120	102	114	117	113	128	147	171	175	175	184	187	160			
70	51.1	62.7	66.8	63.0	47.9	61.0	63.8	60.7	63.1	80.1	96.6	98.0	87.3	101	102	83.7			
75	15.6	23.1	26.5	27.4	19.4	26.9	27.4	25.3	25.3	35.5	46.7	46.3	35.0	46.2	45.1	33.7			
80	1.94	3.23	5.00	7.43	5.08	7.87	6.31	4.65	5.46	8.80	12.4	15.1	9.37	14.2	11.2	7.06			
85	0.61	0.69	0.79	0.89	0.69	0.89	0.87	0.88	0.90	1.05	1.23	1.68	1.08	1.73	1.24	0.92			
90	0.43	0.47	0.51	0.53	0.54	0.55	0.54	0.50	0.33	0.34	0.35	0.34	0.31	0.32	0.32	0.31			
95	0.65	0.70	0.76	0.80	0.82	0.82	0.81	0.76	0.52	0.52	0.51	0.49	0.47	0.47	0.47	0.47			
100	0.97	1.03	1.10	1.16	1.20	1.20	1.18	1.12	0.81	0.79	0.78	0.76	0.73	0.72	0.72	0.72			
105	1.38	1.45	1.54	1.62	1.68	1.68	1.64	1.58	1.21	1.17	1.15	1.11	1.08	1.06	1.05	1.06			
110	1.87	1.95	2.06	2.16	2.24	2.23	2.19	2.12	1.70	1.65	1.60	1.57	1.53	1.49	1.47	1.49			
115	2.44	2.53	2.65	2.77	2.85	2.85	2.80	2.73	2.28	2.20	2.15	2.11	2.06	2.02	1.99	2.01			
120	3.05	3.14	3.27	3.41	3.49	3.50	3.44	3.36	2.89	2.81	2.75	2.71	2.66	2.61	2.57	2.59			
125	3.68	3.77	3.92	4.05	4.14	4.14	4.08	4.00	3.53	3.45	3.39	3.34	3.30	3.24	3.20	3.21			
130	4.30	4.41	4.56	4.68	4.76	4.77	4.71	4.62	4.14	4.07	4.03	3.99	3.94	3.88	3.85	3.85			
135	4.91	5.03	5.18	5.29	5.36	5.38	5.32	5.20	4.73	4.68	4.66	4.61	4.57	4.51	4.49	4.48			
140	5.48	5.61	5.75	5.85	5.94	5.96	5.88	5.77	5.28	5.25	5.26	5.21	5.17	5.11	5.11	5.09			
145	6.01	6.16	6.31	6.41	6.50	6.49	6.41	6.31	5.84	5.80	5.81	5.78	5.76	5.68	5.69	5.67			
150	6.53	6.71	6.85	6.95	7.03	7.00	6.92	6.83	6.37	6.32	6.34	6.31	6.31	6.25	6.24	6.22			
155	7.07	7.26	7.38	7.49	7.55	7.51	7.43	7.34	6.95	6.85	6.87	6.85	6.86	6.81	6.79	6.78			
160	7.62	7.80	7.90	7.99	8.02	7.99	7.91	7.87	7.55	7.41	7.41	7.38	7.39	7.36	7.34	7.34			
165	8.16	8.33	8.40	8.42	8.41	8.40	8.36	8.35	8.14	7.97	7.95	7.90	7.90	7.88	7.90	7.90			
170	8.67	8.78	8.75	8.74	8.71	8.71	8.69	8.74	8.65	8.47	8.43	8.35	8.36	8.33	8.38	8.42			
175	8.98	9.00	8.93	8.92	8.88	8.89	8.89	8.95	9.01	8.84	8.79	8.70	8.70	8.68	8.73	8.77			
180	9.10	9.04	8.97	8.94	8.88	8.91	8.92	8.98	9.12	9.01	9.00	8.91	8.91	8.89	8.94	8.95			

C Range: 0 - 360DEG
C Interval: 22.5DEG
Test Speed: HIGH
Temperature: 25.3DEG
Operators: DAMIN
Test Date: 2021-02-26

γ Range: 0 - 180DEG
γ Interval: 1.0DEG
Test System: EVERFINE GO-2000A_V1 SYSTEM V2.0.407.13
Humidity: 65.0%
Test Distance: 6.590m [K=1.0000]
Remarks:

Photometric Data Table [cd]

G/C	0.0	22.5	45.0	67.5	90.0	112.5	135.0	157.5	180.0	202.5
0.0	12506	12506	12506	12506	12506	12506	12506	12506	12506	12506
3.0	12462	12486	12512	12533	12554	12561	12564	12549	12527	12510
6.0	12400	12461	12539	12533	12572	12575	12590	12572	12523	12511
9.0	12308	12396	12486	12512	12559	12556	12553	12527	12495	12470
12.0	12210	12313	12408	12482	12515	12512	12468	12445	12437	12393
15.0	12106	12208	12289	12407	12407	12429	12338	12301	12323	12289
18.0	11966	12046	12142	12241	12238	12237	12145	12084	12147	12129
21.0	11788	11841	11915	12008	12013	11972	11861	11790	11900	11893
24.0	11558	11564	11611	11677	11681	11587	11452	11420	11572	11592
27.0	11253	11224	11212	11248	11226	11094	10952	10941	11168	11214
30.0	10862	10778	10712	10708	10654	10492	10339	10360	10660	10732
33.0	10354	10236	10069	10051	9940	9781	9591	9673	10068	10164
36.0	9660	9521	9279	9228	9092	8906	8721	8845	9331	9487
39.0	8827	8641	8380	8271	8117	7924	7792	7917	8465	8656
42.0	7830	7629	7370	7210	7070	6865	6788	6916	7485	7708
45.0	6756	6553	6313	6139	5994	5816	5754	5870	6447	6681
48.0	5679	5498	5307	5113	4967	4827	4796	4879	5439	5649
51.0	4668	4513	4359	4176	4039	3921	3898	3980	4502	4700
54.0	3757	3616	3514	3347	3227	3135	3124	3170	3630	3833
57.0	2904	2863	2773	2643	2492	2473	2457	2494	2892	3056
60.0	2191	2132	2139	2011	1882	1889	1893	1900	2215	2402
63.0	1512	1576	1609	1502	1332	1417	1424	1429	1640	1816
66.0	1007	1107	1132	1071	888.1	1020	1036	1017	1134	1310
69.0	619.9	746.0	769.0	730.2	563.9	703.0	725.7	701.8	744.6	912.8
72.0	336.6	443.5	484.4	465.3	340.5	454.6	477.3	445.3	451.9	603.2
75.0	156.5	231.3	265.5	274.4	194.0	269.4	274.3	252.9	252.9	354.7
78.0	55.77	85.78	107.6	135.3	96.58	139.5	120.8	109.8	116.0	176.5
81.0	14.12	16.95	31.83	52.39	33.20	56.28	39.56	25.39	33.08	58.82
84.0	7.623	8.688	10.06	12.72	9.165	13.14	11.11	11.12	11.06	13.04
87.0	4.315	4.696	5.219	5.689	5.102	5.988	5.889	5.570	5.842	6.538
90.0	4.321	4.660	5.142	5.349	5.408	5.526	5.413	4.992	3.326	3.395
93.0	5.548	5.932	6.468	6.765	6.988	7.003	6.870	6.419	4.355	4.345
96.0	7.069	7.541	8.198	8.609	8.918	8.930	8.738	8.215	5.731	5.646
99.0	8.950	9.520	10.27	10.80	11.20	11.20	10.97	10.40	7.443	7.305
102.0	11.19	11.83	12.66	13.32	13.83	13.83	13.54	12.93	9.575	9.346
105.0	13.76	14.46	15.39	16.17	16.80	16.79	16.44	15.82	12.08	11.74
108.0	16.64	17.40	18.42	19.33	20.06	20.04	19.63	18.98	14.95	14.47
111.0	19.82	20.62	21.73	22.76	23.55	23.53	23.08	22.41	18.12	17.52
114.0	23.23	24.08	25.24	26.42	27.24	27.23	26.74	26.00	21.56	20.88
117.0	26.80	27.68	28.92	30.20	31.03	31.05	30.50	29.76	25.18	24.42
120.0	30.52	31.41	32.73	34.08	34.94	34.96	34.37	33.60	28.94	28.12
123.0	34.29	35.20	36.61	37.96	38.83	38.87	38.24	37.49	32.75	31.95
126.0	38.05	39.00	40.49	41.82	42.66	42.69	42.06	41.29	36.52	35.73
129.0	41.81	42.83	44.36	45.58	46.42	46.46	45.85	44.97	40.22	39.50
132.0	45.51	46.59	48.13	49.29	50.06	50.15	49.57	48.54	43.82	43.19
135.0	49.08	50.26	51.78	52.86	53.58	53.77	53.17	52.01	47.26	46.75
138.0	52.54	53.80	55.27	56.29	57.07	57.29	56.59	55.42	50.59	50.20
141.0	55.86	57.21	58.70	59.62	60.52	60.67	59.90	58.82	53.94	53.59
144.0	59.05	60.54	62.03	62.95	63.87	63.90	63.10	62.05	57.30	56.91
147.0	62.12	63.84	65.30	66.24	67.10	66.99	66.17	65.18	60.57	60.07
150.0	65.28	67.14	68.48	69.53	70.27	70.05	69.21	68.26	63.72	63.19
153.0	68.52	70.44	71.68	72.79	73.42	73.09	72.21	71.34	67.14	66.35
156.0	71.82	73.70	74.77	76.00	76.49	76.08	75.27	74.48	70.69	69.62
159.0	75.12	76.96	77.96	79.00	79.32	78.98	78.18	77.64	74.31	73.01
162.0	78.40	80.14	81.09	81.80	81.81	81.59	81.01	80.71	77.91	76.39
165.0	81.65	83.34	84.00	84.19	84.12	83.99	83.55	83.53	81.39	79.67
168.0	84.76	86.25	86.33	86.27	86.12	86.05	85.59	85.98	84.59	82.79
171.0	87.51	88.47	87.91	87.93	87.58	87.60	87.39	87.87	87.39	85.54
174.0	89.43	89.73	89.02	88.98	88.50	88.66	88.58	89.16	89.52	87.73
177.0	90.44	90.45	89.70	89.49	89.00	89.22	89.25	89.85	90.72	89.26
180.0	90.95	90.43	89.72	89.37	88.85	89.13	89.17	89.82	91.17	90.15
G/C	225.0	247.5	270.0	292.5	315.0	337.5				
0.0	12506	12506	12506	12506	12506	12506				
3.0	12495	12471	12449	12451	12441	12449				
6.0	12501	12435	12411	12381	12384	12402				
9.0	12455	12371	12343	12304	12325	12326				
12.0	12364	12294	12270	12220	12224	12230				
15.0	12243	12225	12189	12160	12116	12126				
18.0	12117	12114	12071	12055	11991	11998				
21.0	11937	11952	11939	11909	11862	11829				
24.0	11681	11729	11778	11728	11664	11644				
27.0	11327	11446	11547	11492	11429	11409				
30.0	10902	11058	11228	11171	11114	11073				

C Range: 0 - 360DEG
 C Interval: 22.5DEG
 Test Speed: HIGH
 Temperature: 25.3DEG
 Operators: DAMIN
 Test Date: 2021-02-26

γ Range: 0 - 180DEG
 γ Interval: 1.0DEG
 Test System: EVERFINE GO-2000A_V1 SYSTEM V2.0.407.13
 Humidity: 65.0%
 Test Distance: 6.590m [K=1.0000]
 Remarks:

Photometric Data Table [cd]

33.0	10362	10591	10806	10773	10704	10651
36.0	9686	9990	10238	10228	10132	10086
39.0	8897	9219	9528	9502	9408	9334
42.0	8013	8315	8650	8614	8549	8424
45.0	7019	7304	7648	7591	7552	7390
48.0	6019	6273	6589	6539	6514	6318
51.0	5055	5279	5565	5524	5506	5280
54.0	4157	4361	4605	4579	4550	4317
57.0	3370	3544	3729	3723	3695	3456
60.0	2672	2798	2901	2953	2930	2699
63.0	2051	2123	2183	2239	2247	2010
66.0	1544	1570	1546	1647	1686	1410
69.0	1083	1111	1021	1154	1149	957.2
72.0	731.4	744.6	622.7	760.3	739.0	605.7
75.0	467.1	462.8	350.0	462.5	450.8	336.7
78.0	235.0	250.6	175.9	248.5	215.9	153.5
81.0	84.18	111.4	65.66	102.9	76.86	43.51
84.0	19.05	30.99	16.68	29.39	18.77	12.38
87.0	7.421	7.456	5.161	7.731	6.275	5.105
90.0	3.514	3.352	3.092	3.164	3.167	3.073
93.0	4.365	4.139	3.938	3.933	4.016	3.980
96.0	5.587	5.389	5.182	5.129	5.137	5.115
99.0	7.212	6.970	6.727	6.616	6.611	6.620
102.0	9.167	8.874	8.601	8.419	8.388	8.425
105.0	11.47	11.14	10.83	10.57	10.49	10.59
108.0	14.10	13.73	13.41	13.06	12.93	13.07
111.0	17.07	16.67	16.32	15.89	15.71	15.87
114.0	20.33	19.93	19.52	19.05	18.79	18.96
117.0	23.84	23.40	22.97	22.45	22.14	22.32
120.0	27.52	27.07	26.63	26.07	25.71	25.86
123.0	31.33	30.87	30.43	29.83	29.45	29.58
126.0	35.17	34.70	34.27	33.67	33.30	33.36
129.0	39.03	38.53	38.13	37.53	37.19	37.21
132.0	42.86	42.37	41.96	41.38	41.11	41.03
135.0	46.61	46.09	45.67	45.10	44.95	44.81
138.0	50.22	49.75	49.30	48.74	48.67	48.52
141.0	53.71	53.26	52.92	52.24	52.25	52.10
144.0	57.07	56.68	56.44	55.72	55.74	55.56
147.0	60.30	59.92	59.83	59.13	59.12	58.91
150.0	63.43	63.14	63.11	62.50	62.43	62.23
153.0	66.55	66.33	66.38	65.84	65.72	65.58
156.0	69.75	69.52	69.69	69.18	68.99	68.94
159.0	73.01	72.72	72.89	72.53	72.27	72.28
162.0	76.32	75.91	75.97	75.75	75.68	75.64
165.0	79.54	78.98	78.98	78.82	78.95	79.01
168.0	82.48	81.90	81.89	81.65	82.02	82.24
171.0	85.09	84.34	84.33	84.10	84.62	85.07
174.0	87.33	86.41	86.42	86.26	86.66	87.18
177.0	88.99	88.06	88.07	87.83	88.32	88.64
180.0	90.00	89.07	89.11	88.87	89.38	89.55

C Range: 0 - 360DEG
C Interval: 22.5DEG
Test Speed: HIGH
Temperature: 25.3DEG
Operators: DAMIN
Test Date: 2021-02-26

γ Range: 0 - 180DEG
γ Interval: 1.0DEG
Test System: EVERFINE GO-2000A_V1 SYSTEM V2.0.407.13
Humidity: 65.0%
Test Distance: 6.590m [K=1.0000]
Remarks: