

**L-GLK4**

**RGB Smart Garden Light - 4pc Kit**

**IP65** Ⓢ 220-240V **Bluetooth**



Please read these instructions before commencing installation & retain them for future reference.

**Important information**

It is recommended that the garden lights are installed by a qualified electrician ensuring the installation complies to current IEE wiring regulations & local building control.

- These products are designed for connection to a 220-240V mains supply.
- We will not accept responsibility for any claims arising from a poor installation.

**Installation Procedure**

- Always switch off mains supply before servicing.
- Ensure 220-240V supply voltage.
- Fix the garden lights in a suitable position.
- The garden lights are suitable for external use, but must not be submerged in water.
- Ensure correct wiring connection is made using correct size cables and IP67 or IP68 rated boxes for external use.
- For externally mounted fittings LEDTek recommends electrical connection to an RCD/RCBO protected circuit.

Please note that the lights are not individually controlled and the kit acts as a single unit. All the lamps in the L-GLK4 kit will change the mode or colour at once.

- SPECIFICATIONS:**
- Input: 220-240 V/AC, 50/60 Hz
  - Output Voltage: DC 24V
  - Power: 4 x 12W = 48W Total
  - Adapter: DC 24V, 3A, 72W
  - Up to 6 lights can be installed in series with the supplied adapter
  - 3 metres lead-in to the first light
  - 2 metres cable between lights
  - Lamp body material: ABS
  - Colour Temperature: RGB
  - Luminous Flux: 450-750lm
  - Beam angle: 45-60 degrees
  - IP Rating: IP65
  - Control Type: Bluetooth 4.0 Mesh
  - Bluetooth Range: up to 10m
  - Working Temperature: -25°C~40°C

**DIMENSIONS:**



SCAN THE QR CODE to download the APP:



iOS



Android



Android 4.3

or search "Mesh Lamp" on your App Store or Android Market by Mobile Phone.



**APP CONNECTION AND MODES**

1. Download and install the **Mesh Lamp** application from the App Store (IOS device) or Google Play Store (Android device).



2. Turn on the Bluetooth on your Apple or Android device (see Fig. 1)

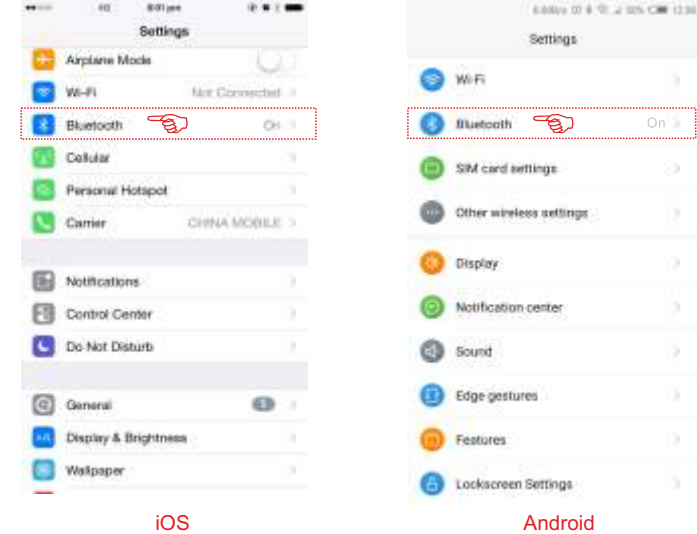


Fig. 1

3. Turn ON the garden lights and enable Mesh Lamp to be data available - "Allow" app to use data and allow Bluetooth devices to be data available even when you are not using the app (Fig. 2). Run the application - when there are garden lights nearby they will be shown in the home page. Select the light to finish the connection (Fig. 3).

4. Tap the garden light kit icon to turn it ON or OFF. Please note: when the icon is yellow the lights will be on and if it is grey they will be off (Fig. 4). Long press the icon to enter the control interface.

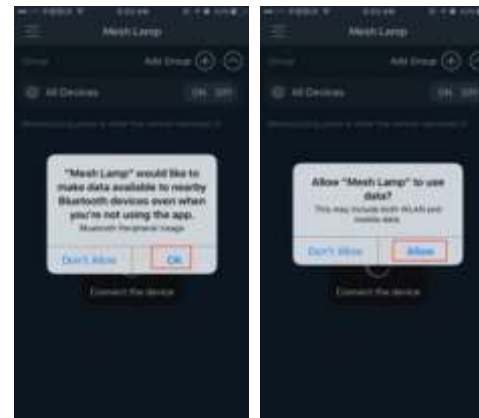


Fig. 2



Fig. 3



Fig. 4

5. You can group up maximum of 250 light sets using the app by tapping "Add Group". You can create multiple groups to control the lights together. The light sets will create a wireless Bluetooth Mesh connection with an effective signal transmission distance of 6-8m between sets. Tap the Group Name and it will open a menu for you to "control, manage and delete" the group. Tap "Manage" button to change a group name or to add devices (Fig. 5). You can choose to add devices to the group from your current device list.

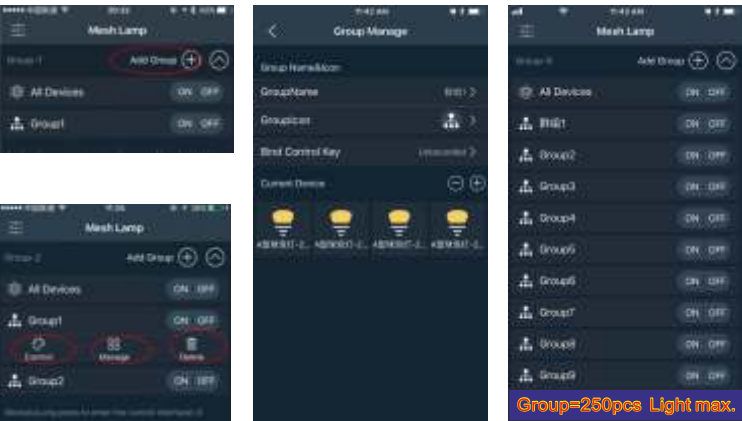


Fig. 5 - Group devices

In order to control the light set tap All Devices or the Group Name you want to control and then tap the "Control" icon that appears.

5. **RGB Mode** - Tap the "Control" button to enter Palette RGB mode. You can adjust both the colour RGB (Red, Green, Blue) as well as the brightness of the colour. There are 7 preset colour buttons for easy access to the individual channels (Fig. 6).



Fig. 6 - RGB Mode

6. **Interaction** - Tap the "Interaction" button to enter Scene mode. There are 7 modes available: Breath, Pick Colour, Music, Shake, Pinch Bomb, Baby Love Colour and Timing Mode (Fig. 7).

**Breath (Breathing Mode)** - There are 9 available colour modes. You can choose your mode from the screen by tapping the icon (Fig. 8).

**Pick Colour** - the garden lights will change colour based on the colour of the object seen through phone's camera.

**Music Mode** - In this mode the connected garden lights will light in the rhythm of the music playing on the smartphone or tablet. To do this, select your music library on smartphone or tablet and select the desired music. With the pause/play button on the left, you can start or stop the music and the LED light (Fig. 9).



Fig. 7 - Interaction



Fig. 8 - Breathing Mode

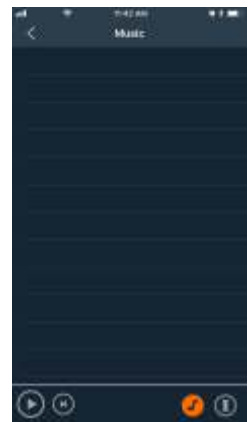


Fig. 9 - Music

**Shake** - Shake your smartphone to change the colour.

**Pinch Bomb** and **Baby Love Colour** - 2 interactive colour games for children and adults alike.

7. **Timer** - Tap the "Timing" icon to access the built-in timer function (Fig 10). Press the "+" button on the top right corner to set a specific time to turn the lights ON or OFF. A selection menu will be shown with the time ON/OFF switch. You can select the desired ON or OFF time or you can set the lights to work in a time interval. By tapping "Events" you can choose the timer action - turn the lights ON or OFF. Choose the days of the week you want the timer to be activated.

After adding successfully, the timer will be shown in your "Timing" list.

Please note: The timer will not operate if the power supply is interrupted.

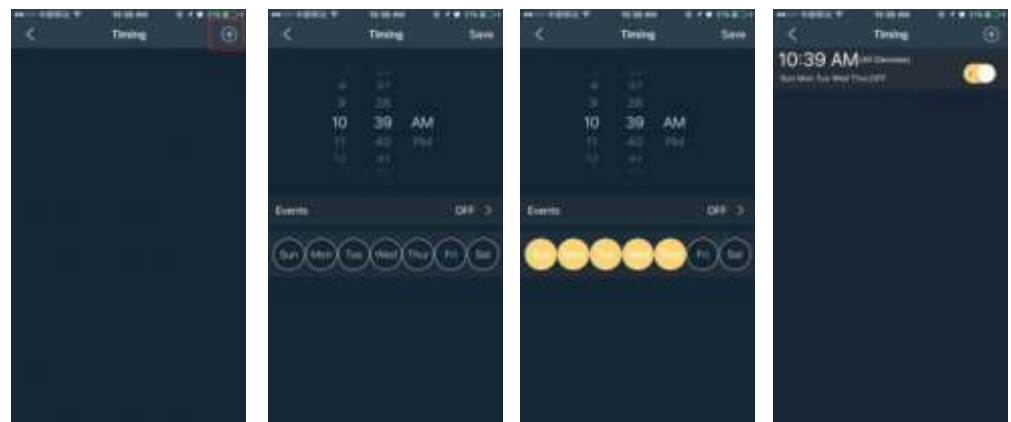


Fig. 10 - Timing Mode