



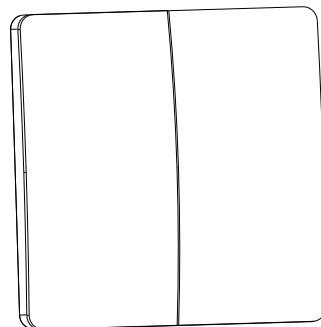
## Dimmable Kinetic Weatherproof Wireless Switch

Installation Instruction



Self Powered No Radiation No Maintenance No Wiring Durable Cost Saving

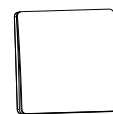
Read instructions carefully before installation



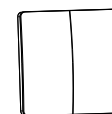
### Product Description

IP67 rated. Its push button style allows for both an on-off option or a dimmable action depending on the Kinetic controller used to pair it with. The switch utilizes macro-energy technology, thus is wireless and has no requirement for batteries or another power source.

### Available Models



1 Gang Grey  
KWP1



2 Gang Grey  
KWP2

### Specifications

**Product model:** KWP  
**Switch Type:** Push button switch  
**Number of keys:** 1-2 keys  
**Power mode:** Kinetic energy self-power (no battery)  
**Operational life:** 200,000 switchings  
**Operating frequency:** 433MHz  
**IP Rating:** IP67  
**Control distance\*:** 80m (outdoor) 25m (indoor)  
**Control Method:** Pairing with Kinetic Controller  
**Installation:** Permanently fixed or placed on wall using self adhesive 3M tape (supplied)  
**Working Temperature:** -10°C ~ +40°C  
**Warranty:** 3 Years

\* Distance comes from Kinetic laboratory test result. The actual distance in practical use might vary due to environmental difference.

Every Kinetic product has passed a strict quality inspection before it leaves the factory. Kinetic provides 3 years warranty if installed & used in accordance with these instructions. Within the 3 years warranty period, Kinetic will be responsible for the repair, free replacement of parts or entire product.

### Weatherproof Protection

The IP protection level of the weatherproof switch is IP67 and it can prevent the damage of the switch from rain or from water spray in daily life.  
Do not install underwater.

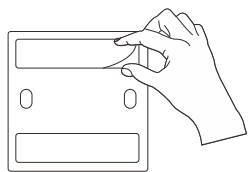
### Dimmable Kinetic Weatherproof Switch Operation:

The dimmable Kinetic IP67 switch must be paired with the dimmable Kinetic controller (see controller instructions for more details about pairing).  
Pressing the switch quickly will turn the light ON/OFF.  
Keep the switch pressed to dim the light to the desired level. While the switch is pressed the lights will go down from 100%-0% and then will go up 0-100%.  
The switch can also be paired with a non-dimmable controller.

### Switch Installation

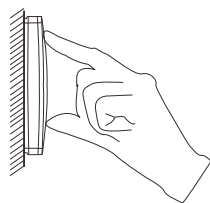
#### Method 1:

Use the double-sided adhesive tape supplied to paste the switch on a stable, smooth and clean surface such as glass, marble and ceramic tiles.



1

Attach double-sided tape to the back

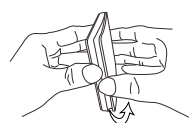


2

Stick the switch on a clean surface

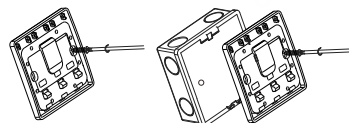
#### Method 2:

Carefully open the switch panel as shown in the figure below and fix the switch on the wall using screws or fix the switch on the traditional switch wall box.



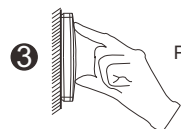
1

Carefully open the switch panel



2

Fix on the wall using expansion screws or on the traditional switch wall box



3

Press the key panel back to the base

### Troubleshooting

After pairing if the switch only turns a light OFF or only dims, unpair by pressing the controller pairing key for about 10 seconds until the indicator light goes off.

Pair again following the controller instructions and check for correct operation.

### Dimensions

