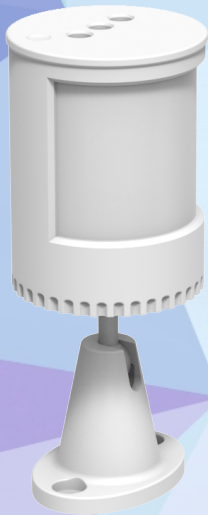




KPIR can be paired with a Kinetic controller to automatically turn ON the lamp after the sensor senses the human body, and automatically turn OFF the lamp after the human body is not sensed. The sensor has adjustable lux level, time and detection distance functions, and IP65 weatherproof capability (using the included IP65 Silicone cover).

It is suitable for indoor and outdoor use, where automatic control of the lights is needed. Flexible control of the lights can be realized by changing the different PIR settings.



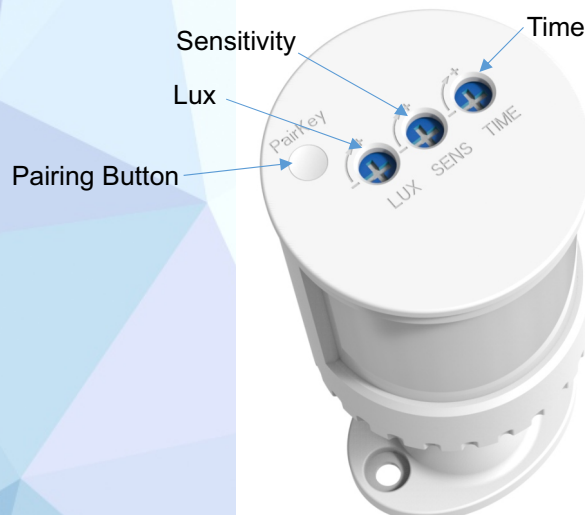
**KPIR**

### PIR Pairing & Keys Operation:

Step 1: Press and hold the pairing button on the PIR sensor for 3 seconds, the sensor indicator will flash slowly (flashing once per second) and then release the button.

Step 2: Press the pairing button on the controller for 3 seconds, the controller indicator flashes slowly (flashing once every second) and then release the button. The controller enters the pairing mode.

Step 3: Press the pairing button on the PIR sensor once; after the indicator on the controller stops flashing, the pairing is successful. This pairing method will control the light automatically by turning it on when a person is sensed, and the light will automatically be turned off if the person leaves the area.



Increase clockwise,  
decrease counterclockwise

**Kinetic PIR Specifications:**

<b>Switch Type</b>	PIR Sensor
<b>Power Supply</b>	1 x CR2450 Battery (included)
<b>Battery Life</b>	Up to 2 years (Red LED indicator for low battery)
<b>Communicating Frequency</b>	RF 433Mhz
<b>Control Distance</b>	up to 20m
<b>Control Method</b>	Pairing with Kinetic controlling receiver
<b>Weatherproof Level</b>	IP65 (using included Silicone Cover)
<b>Sensitivity Range (adjustable)</b>	0-10m
<b>Lux Level (adjustable)</b>	30-3500lux
<b>Time Range (adjustable)</b>	3sec to 10min
<b>Operating Temperature</b>	-20°C ~ +55°C
<b>Working Humidity</b>	10% ~ 25%RH (No condensation)
<b>Detection Angle</b>	170°
<b>Installation Method</b>	Fixed bracket (adjustable installation angle, 360° rotatable)
<b>Bracket Installation Method</b>	3M sticker or screw installation (included)
<b>Warranty</b>	3 Years

**Dimensions:**
